

## BSS

" Suitable for temperatures up to 300°C "



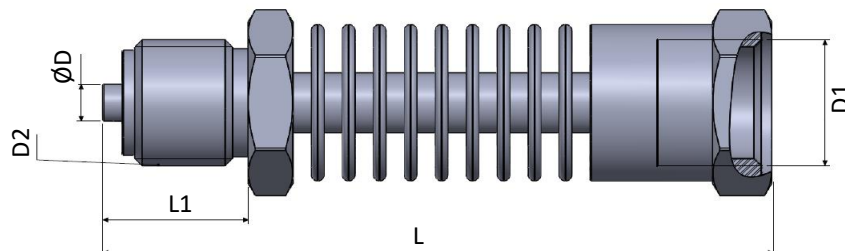
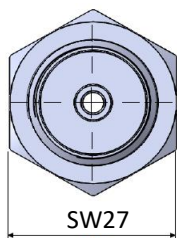
Pressure transmitter cooling elements are products that cool the body of the pressure transmitters in high temperature applications and protect them from temperature. It can be used by connecting several products in a row according to the temperature. It can be used in different connections with different inlet / outlet dimensions.

- Suitable for temperatures up to 300°C
- Suitable for pressures up to 400 bar
- G1/2 or G1/4 connections

### TECHNICAL FEATURES

<b>Operating Temperature</b>	300°C max.
<b>Housing Material</b>	Stainless Steel 316L
<b>Mechanical Connection</b>	G1/4F-G1/2M, G1/4F-G1/4M, G1/2F-G1/2M, G1/2F-G1/4M
<b>Weight</b>	~280 gram
<b>Max. Pressure</b>	400 Bar

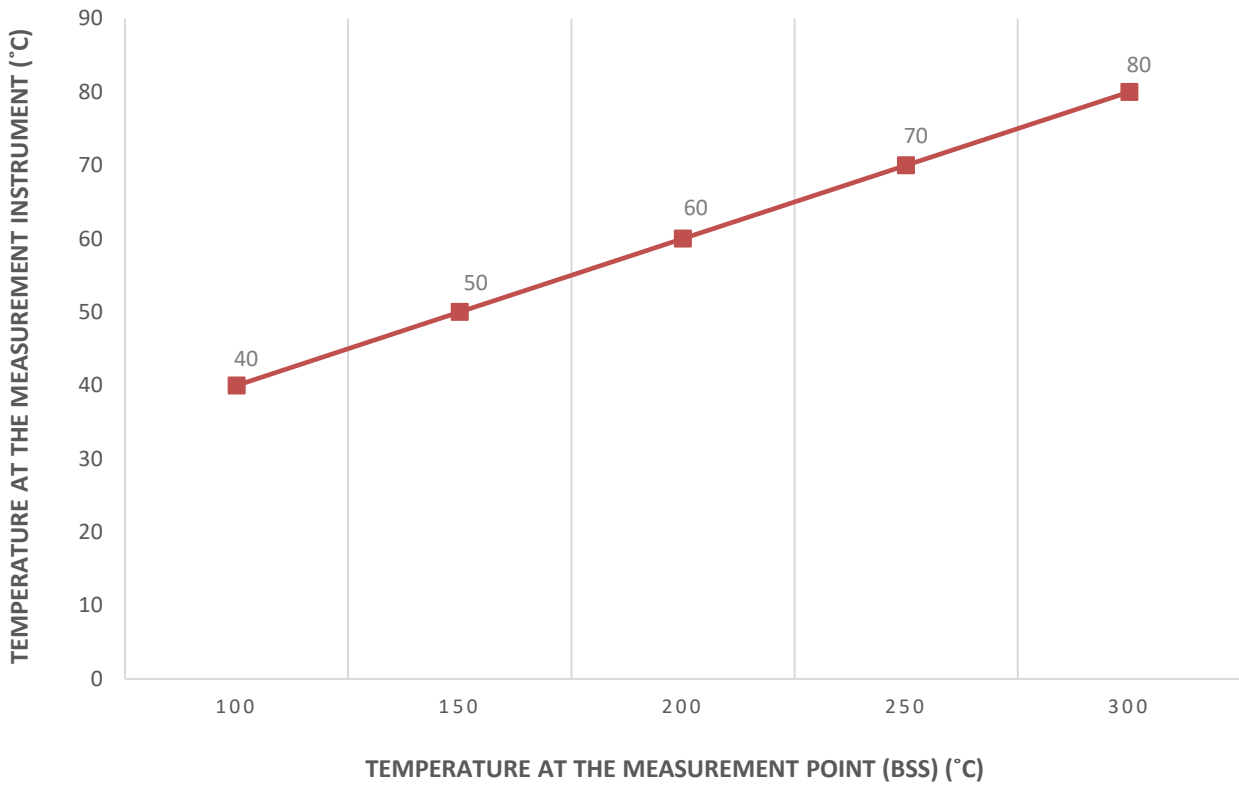
### MECHANICAL DIMENSIONS (mm)



	D1 (inch)	D2 (inch)	L (mm)	L1 (mm)	∅D (mm)
G1/4F – G1/2M	G1/4	G1/2	108	23,5	6,15
G1/2F-G1/2M	G1/2	G1/2	108	23,5	6,15
G1/2F-G1/4M	G1/2	G1/4	100	15	5
G1/4F – G1/4M	G1/4	G1/4	100	15	5

## CHARACTERISTIC CURVE

Temperature characteristics at 24°C ambient temperature



## ORDER CODE

Model				Mechanical Connection
<b>BSS</b>	-	<b>26</b>	-	G1/4F – G1/2M G1/2F-G1/2M G1/2F-G1/4M G1/4F – G1/4M
<b>Body Diameter</b>				
<b>26: 26 mm</b>				